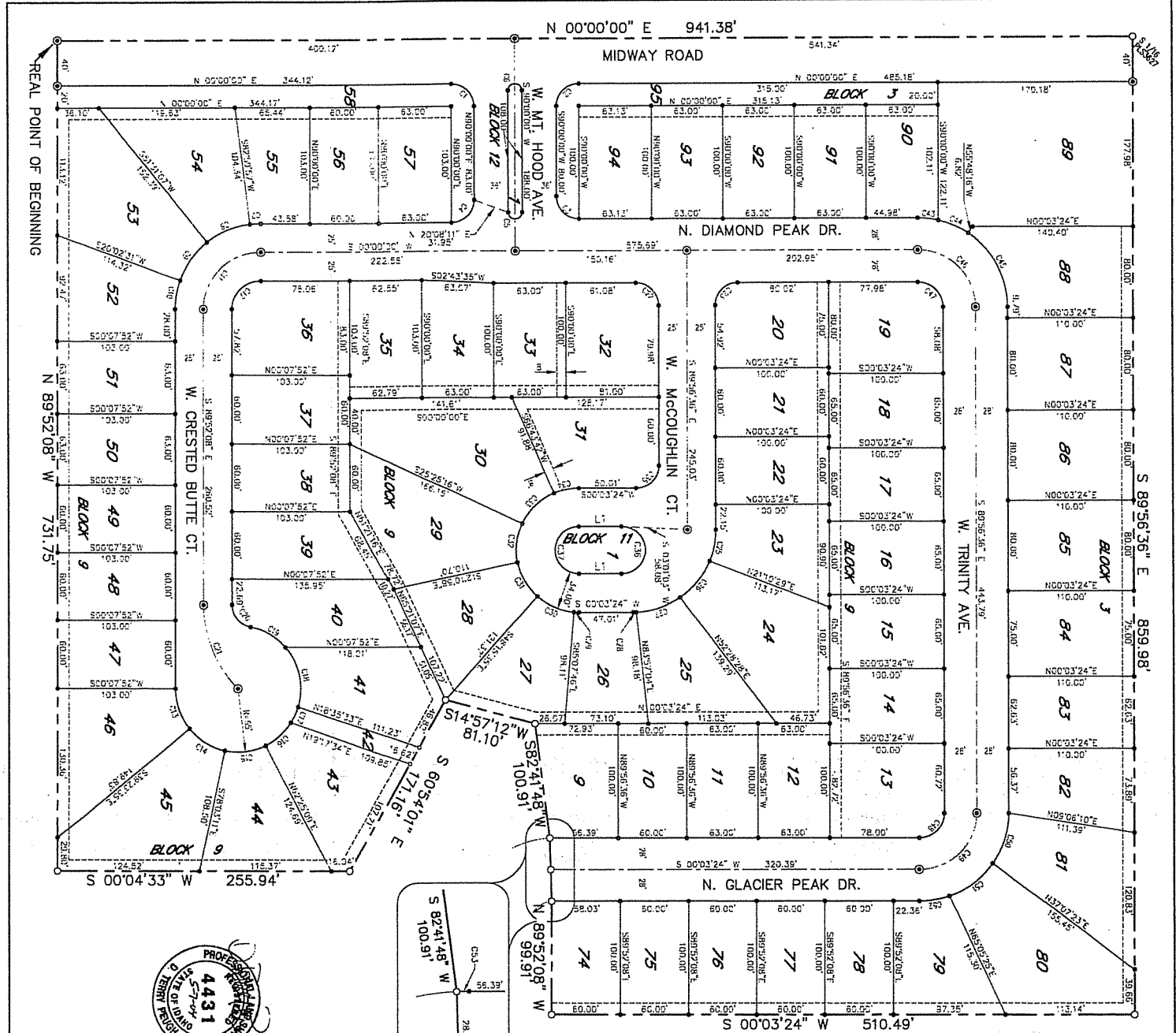
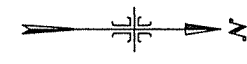


PLAT SHOWING CRESTWOOD ESTATES SUBDIVISION NO. 4



| LINE | LENGTH | BEARING |
|------|--------|---------------|
| L1 | 37.01 | N 00°00'00" E |
| L2 | 37.01 | N 00°00'00" E |



SCALE: 1" = 60'

| CURVE | RADIUS | LENGTH | CHORD | DELTA |
|-------|--------|--------|-------|-------|
| C1 | 20.00 | 11.41 | 28.28 | 90.00 |
| C2 | 20.00 | 11.41 | 28.28 | 90.00 |
| C3 | 20.00 | 11.41 | 28.28 | 90.00 |
| C4 | 20.00 | 11.41 | 28.28 | 90.00 |
| C5 | 20.00 | 11.41 | 28.28 | 90.00 |
| C6 | 20.00 | 11.41 | 28.28 | 90.00 |
| C7 | 20.00 | 11.41 | 28.28 | 90.00 |
| C8 | 20.00 | 11.41 | 28.28 | 90.00 |
| C9 | 20.00 | 11.41 | 28.28 | 90.00 |
| C10 | 20.00 | 11.41 | 28.28 | 90.00 |
| C11 | 20.00 | 11.41 | 28.28 | 90.00 |
| C12 | 20.00 | 11.41 | 28.28 | 90.00 |
| C13 | 20.00 | 11.41 | 28.28 | 90.00 |
| C14 | 20.00 | 11.41 | 28.28 | 90.00 |
| C15 | 20.00 | 11.41 | 28.28 | 90.00 |
| C16 | 20.00 | 11.41 | 28.28 | 90.00 |
| C17 | 20.00 | 11.41 | 28.28 | 90.00 |
| C18 | 20.00 | 11.41 | 28.28 | 90.00 |
| C19 | 20.00 | 11.41 | 28.28 | 90.00 |
| C20 | 20.00 | 11.41 | 28.28 | 90.00 |
| C21 | 20.00 | 11.41 | 28.28 | 90.00 |
| C22 | 20.00 | 11.41 | 28.28 | 90.00 |
| C23 | 20.00 | 11.41 | 28.28 | 90.00 |
| C24 | 20.00 | 11.41 | 28.28 | 90.00 |
| C25 | 20.00 | 11.41 | 28.28 | 90.00 |
| C26 | 20.00 | 11.41 | 28.28 | 90.00 |
| C27 | 20.00 | 11.41 | 28.28 | 90.00 |
| C28 | 20.00 | 11.41 | 28.28 | 90.00 |
| C29 | 20.00 | 11.41 | 28.28 | 90.00 |
| C30 | 20.00 | 11.41 | 28.28 | 90.00 |
| C31 | 20.00 | 11.41 | 28.28 | 90.00 |
| C32 | 20.00 | 11.41 | 28.28 | 90.00 |
| C33 | 20.00 | 11.41 | 28.28 | 90.00 |
| C34 | 20.00 | 11.41 | 28.28 | 90.00 |
| C35 | 20.00 | 11.41 | 28.28 | 90.00 |
| C36 | 20.00 | 11.41 | 28.28 | 90.00 |



- LEGEND**
- FOUND BRASS OR ALUMINUM CAP MONUMENT
 - SET 5/8" X 30" IRON PIN
 - SET 1/2" X 24" IRON PIN
 - SET 1/2" X 24" IRON PIN WITH PLASTIC CAP, PLS 4431
 - SET 1/2" X 24" IRON PIN WITH PLASTIC CAP, PLS 4431
 - FOUND 5/8" IRON PIN, PLS 4431 OR AS NOTED
 - FOUND 1/2" IRON PIN, PLS 4431
 - PROPERTY BOUNDARY
 - EASEMENT LINE (SEE EASEMENT DETAIL AND NOTES 1, 2, & 3)
 - STREET CENTERLINE
 - RIGHT-OF-WAY LINE
 - SECTION LINE
 - LOT NUMBER